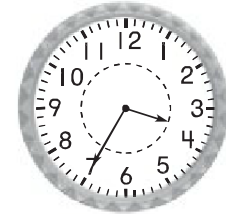
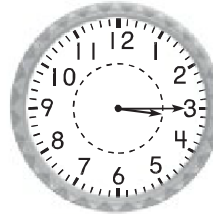


Name \_\_\_\_\_

**Elapsed Time in Minutes****Essential Question** How do you find the number of minutes between two times?**Model and Draw**

You can use subtraction if the times are within the same hour.

Ken starts cleaning his room at 3:15 P.M. He finishes at 3:35 P.M. How long does it take Ken to clean his room?

$$\begin{array}{r} 35 \\ - 15 \\ \hline 20 \end{array}$$


Starts at 3:15 P.M. Ends at 3:35 P.M.

So it takes Ken 20 minutes.**Share and Show**

Subtract to solve. Show your work.

1. Leah starts eating lunch at 12:10 P.M. She finishes at 12:25 P.M. How long does it take for Leah to eat lunch?
- \_\_\_\_\_

\_\_\_\_\_ minutes

2. Kwan gets on the school bus at 8:10 A.M. He gets to school at 8:55 A.M. How long is Kwan's bus ride?
- \_\_\_\_\_

\_\_\_\_\_ minutes

3. Carla takes her dog to the park at 2:05 P.M. She gets back at 2:40 P.M. How long does Carla walk her dog?
- \_\_\_\_\_

\_\_\_\_\_ minutes

4. Ethan starts his spelling homework at 6:25 P.M. He finishes at 6:45 P.M. How long does Ethan work on his spelling?
- \_\_\_\_\_

\_\_\_\_\_ minutes

**Math Talk**

How could you check your answers by looking at a clock?